

# End-to-End

## The Parish Magazine of Rivenhall and Silver End



Cream Teas Anyone lovely day on the Village  
Green Sunday 8th August

September 2021

50p

## **The Following are our services For September 2021**

### **5<sup>th</sup> September**

9.30 am St Francis

11 am St Mary's

### **12<sup>th</sup> September**

9.30 am St. Francis

11 am St Mary's

### **19<sup>th</sup> September**

9.30 am St. Francis

11 am St Mary's

### **26<sup>th</sup> September**

9.30 am St. Francis

11 am St Mary's

### **14<sup>th</sup> Sunday of Trinity**

Holy Communion

All Age Worship

### **15<sup>th</sup> Sunday of Trinity**

Morning Prayer

Holy Communion

### **16<sup>th</sup> Sunday of Trinity**

Holy Communion

Matins

### **17<sup>th</sup> Sunday of Trinity**

Morning Prayer

Holy Communion

## **Church Contacts**

Team Vicar Rev. Paulie Watkin

Churchwarden Ann Clarke

Churchwarden Peter Hope

Rivenhall Contact Carole McCarthy

Silver End Contact Ruth Aitken

Rivenhall Website

St Francis Silver End Website

Rivenhall Website

St Francis Silver End Website

01376 583930 psgw100@aol.com

01376 514825

01376 502605

01376 512781

01376 583846

[www.stmarysrivenhall.co.uk](http://www.stmarysrivenhall.co.uk)

[www.st-francis.org.uk/](http://www.st-francis.org.uk/)

[www.stmarysrivenhall.co.uk](http://www.stmarysrivenhall.co.uk)

[www.st-francis.org.uk/](http://www.st-francis.org.uk/)

Contact the Editor 07904 235101 or phope02@gmail.com

## **From Peter Hope**

### **Magazine Editor and Church Warden**

Dear Readers and Church Members it is with sadness for our parish that I have to report that the Rev. Paulie Watkin our priest for the past 10 years will be moving to a new post in the Yorkshire Parish of Tadcaster later this year. It is quite normal in the Church of England that a priest moves parishes after 8 to 10 years and this is the pattern of life for a Church of England priest.

As one of the team who interviewed and recommended that Paulie , should be recruited to the post of Team Vicar for Rivenhall and Silver End I am very pleased to have worked along side him for all his time here, as has Ann Clarke and Oliver Clarke who have both been Churchwardens and in Ann's case treasurer during this time. Ann has also had special duties repairing and sowing his robes and other garments!

At the time Paulie was single and had previously been in a curacy in North Essex area. However it wasn't long before he met and then married Tara.

It was wonderful for the church community that the wedding was held in our own Church, the first time we've had an incumbent marry in the church at least in living memory. The date was the 3rd of March 2012 and it was a very colourful occasion with fine weather for the time of year followed by a reception in Rivenhall village hall. Lillian Pearce particularly remembers lending her Farm House for Paulie and his Parents to use during the night before the Wedding. On the morning of the Wedding Paulie came down stairs and asked Lillian "How do I look" reassurance was duly provided.

Paulie and Tara soon started a a family and Tallulah was the first of their three Children followed by Esme and Asher.

Until Covid curtailed our services Tallulah his eldest daughter would participate with much energy in our first of the month family service.

In better times before Covid, Paulie's Ministry provided a platform for the development of the Junior Choir led by Emmelia.

We have held a wonderful Pet Service every October at St Francis Church Silver End. This has been extremely well attended over the years and attracted plenty of Dogs, Cats, a Snake, assorted horses and Donkeys and on one occasion a Hornet bought for a blessing by Martin Andrews!



### Pet Service St Francis 2018

I Think during this time one of the greatest achievements was getting the Thatch Roof at St Francis replaced. Thanks to Paul and the members of the congregation from both churches in the Parish over £40,000 was raised to have the thatch work caried out.

St Francis Church has become quite a success story. In that average attendances (Covid excepted) have increase by over

a third since Paulie's arrival.

We have in his time held many successful fund raising events a particular fun and profitable one was Paulie's Barbers shop (not the singing variety). Paulie would cut hair for a small fee on the stage at Silver End Village hall as one of the many side stalls at the Annual Parish Bazaar.

Our Harvest services were also very well attended by the Children from both schools (See picture in the centre of the Magazine) and Paulie would use local flower donated by the Pearce family to bake a genuine local loaf of bread.

***Paulie our community will miss you and we wish you  
Tara and the family a happy and healthy future in  
Tadcaster.***

\*\*\*\*\*

### **A Message from the Witham Team**

Hello again. The Lord be with you!

Well, here's another letter, but just a short one on this occasion. However, I want to share the news announced in the churches in our Team Ministry yesterday.

Revd Paulie Watkin, our Team Vicar at Rivenhall, Silver End and White Notley, has been offered, and has accepted, the post of Vicar for the Tadcaster benefice in York Diocese. The announcement was also made simultaneously in Tadcaster.

All the legal preliminaries have been completed, but the timing of Paulie's move is still being finalised. It is Likely that Paulie's last service within the Team Ministry will be at the end of October, with his licensing in Tadcaster at some time in November.

Many congratulations to Paulie on this next step in his ministry. Paulie has been among us in the Witham team for ten years, and has been a great colleague and friend, especially during the 28 months of our rectoral vacancy and the coronavirus pandemic.

Paulie has also contributed to the work of the Diocesan Environment Group for many years, so his contribution will be

greatly missed at both the Diocesan and local levels.

Paulie will be keeping us all in his prayers and thoughts over the weeks ahead, as he prepares to make the move to Tadcaster with his family. Although we shall be sad to see him leave we will hold him in our prayers.

**Rev. Christine Newmarch**

\*\*\*\*\*

## **DONATIONS FOR AFGHAN REFUGEES**

Afghanistan is on the Covid red list, so refugees are required to complete a period of isolation before being settled in the community. Some have now arrived in Essex, with Braintree Council working to identify suitable housing in our area. Donations are already flooding in across the County so that new arrivals will have the necessities of life and a few treats as well. Essex County Council has set up collection centres, but as none is handy for us, Revd Will has set up an informal drop-off point for donations at Witham Vicarage, 18 Witham Lodge, CM8 1HG.

The items most in need include clean clothes for adults, children and teenagers - labelled with size, shoes, toiletries, including toothbrushes, toothpaste, deodorant, sanitary items, shower gel, baby milk and nappies, crockery such as mugs etc., kettles and other small electrical items, and toys and entertainment for children and young people. For more information contact Revd Will: [will.vicarage@gmail.com](mailto:will.vicarage@gmail.com)

\*\*\*\*\*

## **Readings and Collects for September 2021**

**5<sup>th</sup> September 14<sup>th</sup> Sunday of Trinity**

### **Readings**

Isaiah 35:4-7a

James 2:1-10, (11-13), 14-17

Mark 7:24-37

### **Collect**

Merciful God,  
your Son came to save us  
and bore our sins on the cross:  
may we trust in your mercy

and know your love,  
rejoicing in the righteousness  
that is ours through Jesus Christ our Lord.

### **12<sup>th</sup> September 15<sup>th</sup> Sunday of Trinity**

#### **Readings**

Isaiah 50:4-9a

James 3:1-12

Mark 8:27-38

#### **Collect.**

Lord God,  
defend your Church from all false teaching  
and give to your people knowledge of your truth,  
that we may enjoy eternal life  
in Jesus Christ our Lord.

### **19<sup>th</sup> September 16<sup>th</sup> Sunday of Trinity**

#### **Readings**

Wisdom of Solomon 1:16-2:1, 12-22

James 3:13-4:3, 7-8a

Mark 9:30-37

#### **Collect**

Lord of creation,  
whose glory is around and within us:  
open our eyes to your wonders,  
that we may serve you with reverence  
and know your peace at our lives' end,  
through Jesus Christ our Lord.

### **26<sup>th</sup> September 17<sup>th</sup> Sunday after Trinity**

#### **Readings**

Numbers 11:4-6, 10-16, 24-29

James 5:13-20

Mark 9:38-50

#### **Collect**

Gracious God,  
you call us to fullness of life:  
deliver us from unbelief  
and banish our anxieties  
with the liberating love of Jesus Christ our Lord.

## **The 50/50 Club August 2021 winners**

1<sup>st</sup> Mrs Wood

2<sup>nd</sup> M Bacon

3<sup>rd</sup> P French

\*\*\*\*\*

### **RIVENHALL PARISH COUNCIL**

#### **NOTES OF COUNCIL MEETING HELD ON 3<sup>RD</sup> AUGUST 2021**

**These notes are an abridged version of the minutes**

**Present:** Cllrs. Abbott (Chairman), Wright (Vice-Chairman), Cairns, Elliott, Prime and Turner.

**Also present:** Parish Clerk, ECC Cllr. R. Playle and 1 member of the public.

#### **Public Forum**

- ECC Cllr. Playle reported that there is to be a site meeting to discuss the proposed new footpath along Church Road.
- A resident asked about the still missing Rectory Lane 'Quiet Lane' sign. The Chairman confirmed that this had been raised with ECC numerous times, and would be again.
- Complaints have been received relating to dust created by HGVs accessing Brice Aggregates Colemans Quarry.

#### **Matters for Discussion**

##### Possible speed restrictions along Oak Rd from A12 to Henry Dixon Road

Following a discussion about measures needed in the years before the A12 widening takes place, it was **agreed** to request Essex Police to locate speed cameras along Oak Road from the A12 to the junction with Henry Dixon Road and to enforce the weight restriction from Rivenhall End to Rivenhall main village. It was also agreed to request Highways England to install additional signs on the A12 giving better advance warning of the sharp exit on to Oak Road.

##### Damage to glass bus shelter, Rickstones Road

The glass bus shelter has once again been damaged and the Clerk has registered a claim with the council's insurers and

has received a quote for the repair.

### Highway Maintenance

The maintenance contractor will be requested to cut back the sight line from the exit on to Oak Road of footpath 59, opposite the drive to Hoo Hall.

The dilapidated signs at the top of Park Road have been reported to ECC for repair.

Oak Road is due to be closed from the A12 to Henry Dixon Road overnight for drainage improvements. The work is expected to start on 2nd September 2021 for 6 nights between 8pm and 5am (though ECC says those details could be varied if need be for the works).

BDC is to be requested to invest in low railings to prevent vehicle parking on the main Village Green along Beech Road.

A request has again been made to ECC for them to rectify the drainage issues at the Rickstones Road/Rectory Lane junction.

### General Maintenance

The maintenance contractor will be reminded to clear the overhanging foliage along Oak Road below Smith's Corner.

BDC will be requested to install a larger litter bin, with a lid, at the Oak Road recycling site with the aim of preventing birds and other animals scattering the rubbish.

## **Planning Applications**

There were no new applications to be considered.

Planning results:

The following applications have been granted by BDC:

**21/01264/HH:** Single storey extension, 10 Foxmead, Rivenhall End.

**21/01998/SCR:** Screening Request for solar farm, land off Park Road.

Planning Enforcement:

Matters relating to the surface water discharge from the SEND school onto Rickstones Road and into the ditch alongside the John Ray walk are ongoing.

The plastic fencing along Rickstones Road has been moved back but it still encroaches on to, and encloses part of, the ECC

highway verge.

## **Ongoing Planning Issues**

### A12 to A120 widening

The Highways England public consultation ran until 16<sup>th</sup> August. Rivenhall Parish Council submitted its comments following a well-attended public presentation by Highways England at the Rivenhall Hotel.

### BDC Local Plan

The Chairman in his role as a district councillor took part in the Examination of the Section 2 Local Plan in July supporting the Green Buffer policy for land between Witham and Rivenhall. Local landowner representatives argued at the Examination that the Green Buffer should be deleted as it could stifle future development. The Planning Inspector has requested further explanatory documents from BDC in support of its current proposals. This may result in a further consultation.

### Bradwell Quarry

Major soil movement is taking place between the location of the proposed waste site and existing quarry voids. Further planning applications are expected for the waste site.

### Colemans Quarry

BDC has sent a strong objection to ECC regarding the current planning application to expand the quarry, increase HGV movements and import waste for landfill. The Chairman will circulate the objection document to all parish councillors and it was agreed that the Chairman will represent the views of RPC at the ECC Planning Committee meeting.

Regarding the consultation document produced by Brice Aggregates about their next planning application, it was agreed that RPC write in support of the comments submitted by Little Braxted Parish Council in opposition to the proposals.

### Braintree Local Highways Panel

The next meeting is scheduled for 30<sup>th</sup> September 2021.

## **Information exchange and items for the September agenda**

The Clerk is to arrange for the next 3 Parishes Meeting to be held in Rivenhall at the end of October 2021.

Tree planting locations to be considered at the September meeting.

BDC has requested that the New Rickstones Academy provide suitable bins for the use of those teachers who smoke and drop cigarette butts at the service access off Rickstones Road.

With the probable future increase in the number of local residents due to the new housing developments within the parish, the Clerk will investigate any possible increase in councillor numbers.

**Public feedback**

Further comments re the drainage of surface water from the SEND school on Rickstones Road.

**Dates of future meetings**

7<sup>th</sup> September at The Henry Dixon Hall and 5<sup>th</sup> October at Rivenhall Village Hall, both meetings starting at 7.30pm.

**Parish Council facebook page**

Rivenhall Parish Council now has a facebook page at:

<https://www.facebook.com/RivenhallPC>

\*\*\*\*\*

**Sky Notes September 2021**

The Autumn Equinox takes place this year on September 22nd, when the hours of day and night are broadly equal. Although the Sun is getting lower in the sky each day, for several hours in the middle of the day it can feel warm through early Autumn as the Sun still attains over 30 degrees above the horizon when in the South.

Jupiter and Saturn remain prominent and in mid-month at around 10pm they are in the South, rather low down. The waxing gibbous Moon will be just below and to the right of Jupiter on the night of the 17th/18th.

The September Full Moon can be seen on the night of the 20th/21st and will be about twice as high in the sky as the mid-summer Full Moon.

Venus might be glimpsed low down in the West after sunset throughout the month.

The best period for dark skies stargazing will be the first half of the month, with twilight ending by about 9.30pm. Looking to the North East the familiar W shape of the constellation of Cassiopeia is about half way up the sky at 10pm. Beneath the left hand star of the W is one of the best star clusters in the entire sky. Seen as a hazy patch to the unaided eye, binoculars or a small telescope reveal there are actually 2 distinct star clusters. They appear to be side by side but in reality are separated in space, with distances from us of 7,100 and 7,400 lightyears. They are both very young in astronomical terms, at 5.6 and 3.6 million years old, respectively. Young clusters like these are tightly packed together, but as they age the stars will spread out into space.

During the Covid restrictions it was not possible to hold Astro evenings but we can now resume and the next one will be on Friday September 10th starting at 7.30pm. We meet at the southern end of Park Road Rivenhall at the sharp bend where there is a large Oak tree. There is some parking there just off the road. Further details on the Rivenhall Observatory facebook page. Sky Watcher

\*\*\*\*\*

## **Stuffed Marrow**

A Marrow

Onions

Any vegetables (pepper, broccoli, mushrooms etc)

Minced beef – depends on the size of the marrow, small 200g – large 400g

Cheese

Tomato Puree,

Flour about 1 tablespoon

Salt and pepper

Method slice the marrow and core the slices – you need rings of marrow.

Lightly fry the beef, chopped veg and add tomato and seasoning.

When cooked, put in a bowl and mix together. Add flour to thicken.

Put marrow rings on a suitable dish and generously fill centres with the mixture. Grate cheese over the top and brown in oven. Gas 4, 180 for about twenty minutes until golden brown.

### **Revd. Dr. Jonathan Pritchard**

Further to the announcement back in March Jonathan has now arrived in Witham and will be licenced as the Team Rector for the Witham and Villages Team Ministry on Monday 6th of September. Jonathan has said and I quote:-

*"I'm really looking forward to coming to serve as Team Rector in Witham and the Villages. There is such good here, such potential - a world shot through with grace. Together, we will open a new chapter of that old, ever new story of God's faith in us. And I'm really looking forward to Essex too. A strong and distinct identity - not unlike Yorkshire where we currently live, though not so many hills.. "*

We look forward to welcoming Jonathan and ask for your prayers for him and for his family as they move into the Witham Rectory as he prepares to take up his new ministry.

### **The Following is an extract from the Keighley News**

Jonathan said: "It is a huge wrench leaving Keighley, for me and my family, because we love the people and this is what I believe Christ's ministry is always grounded upon – the love that makes sense of us, hallows us, challenges and impels us.

"In my new role I will primarily be based at St Nicolas, Witham -- a beautiful medieval church in a growing town.

"There will be much to do, new challenges and new opportunities. But I will always remember Keighley – its many and varied people and communities and all that we've shared together."

During his time in Keighley, the Rev Dr Pritchard has been involved in many organisations – from United Keighley to Highfield Film Collective.

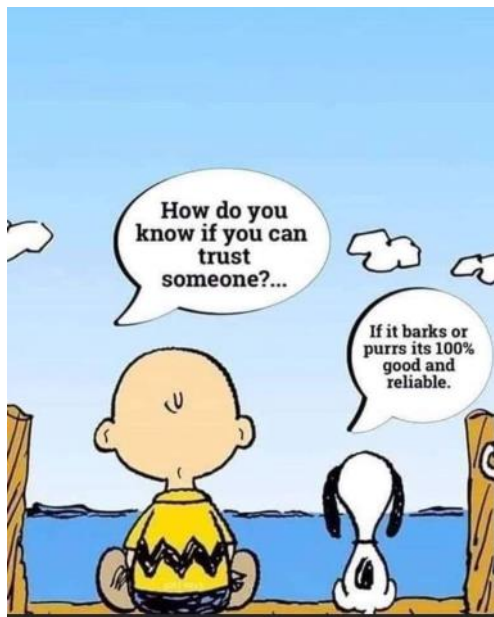
Archdeacon of Bradford, the Ven Andy Jolley, pays tribute.

He said: "Jonathan is to be congratulated on his appointment to this significant post of team leadership in the Diocese of Chelmsford.

"Bishop Toby Howarth and I are most grateful to him for his faithful service in Keighley over the past 16 years – and the part he played in the transition five years ago to a united parish.

"His work with United Keighley and in establishing support for asylum seekers has been particularly notable.

"Jonathan's leaving will create some significant gaps and so we will be working with team rector Mike Cansdale, the parochial church council and others to consider what skills and experience we will now need to find for the future. We are praying for the parish as well as for Jonathan, Anna and the family as they move to Essex."





# CONNECTED CABS WITHAM

01376 317777



Wheelchair Accessible

All fares fixed price (no meters)

Card payments accepted in cars

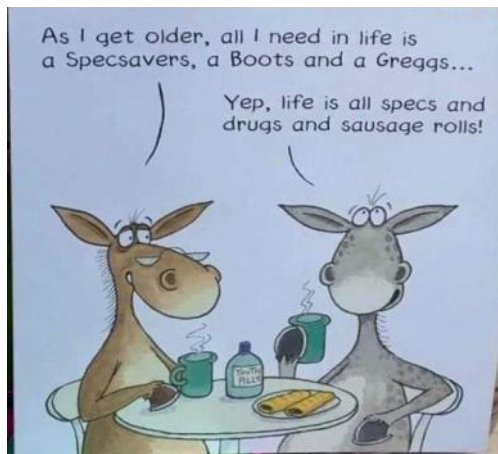


## Prices from Witham:- Hospitals

Broomfield	£22
Colchester General	£25
Springfield	£18
St Peters/ Braintree	
Community	£15
Maldon	£15

## Airports

Stansted	£40
Heathrow all Terminals	£96
Gatwick	£95
London City	£75
Southend	£50
Loton	£95



Aerial Photography

Barns

Chimneys

Roof Tops

**COST EFFECTIVE, SAFE ACCESS,  
ROOF TOP INSPECTIONS BY  
DRONE WITH NO NEED FOR  
SCAFFOLD, TEMPORARY WORK  
OR STRUCTURES REQUIRED.**

**NON DISRUPTIVE, FAST AND  
PROFESSIONAL SERVICE, SAME  
DAY REPORTS AND  
RECOMMENDATIONS FOR  
REPAIRS**

**FULLY CAA AND CIOB  
REGISTERED, QUALIFIED AND  
INSURED SERVICE. CARRIED OUT  
BY EXPERIENCED SURVEYORS.**

Call to discuss your requirements;  
Chris; 07817219133  
Jim; 07966403783  
email; [highsightse@gmail.com](mailto:highsightse@gmail.com)

Historic Buildings Monitoring

Building Inspections

Estate Records

# ANGLIA TREE SERVICES

Specialist tree surgery

Residential & Commercial Customers

CROWN REDUCTION • FELLING • TOPPING

HEDGE TRIMMING • ALL GARDEN WORK

STUMP GRINDING

For a quick, tidy and friendly service call:

Tel: 01621 892831



7 DAYS A WEEK • EMERGENCY SERVICE AVAILABLE • FULLY INSURED



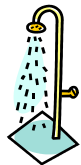
**Philip Little**

Property Maintenance Magician

Local service at local prices

Knowledgeable and friendly

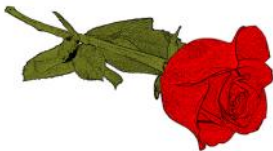
**07973 129808 or 01376 515257**



Serving the Local Community for over 125 Years

# G. COLLINS & SONS

Funeral Directors Ltd



30 RAYNE ROAD, BRAINTREE, CM7 2QH

01376 342266

4 THE STREET, WHITE NOTLEY, CM8 1RH

01376 583750

[WWW.GCSFD.CO.UK](http://WWW.GCSFD.CO.UK)

## Beautiful Rooms For Rent In Witham & Braintree

We have 4 Lovely houses  
2 in Witham—2 in Braintree  
With and Without en-suites  
£90—£130 per Week

(All inclusive of Rates, Light, Heat, and with Broadband)

See our Website:- [www.jbwpartners.co.uk](http://www.jbwpartners.co.uk)

Or Call

John

07850 161629

Mavis

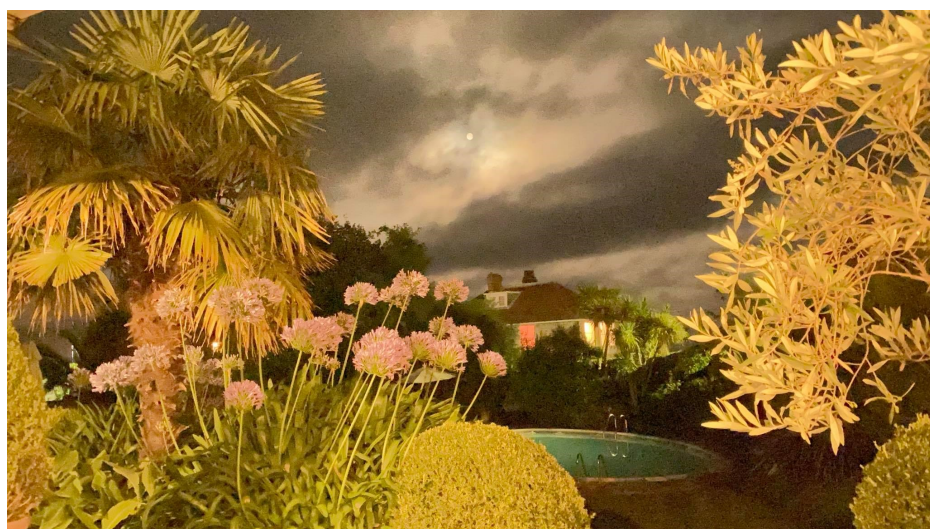
07714 579783

Michelle

07966 323914



Those Pesky Scarecrows they steal the show every time.  
More Cream Tea Pictures



**Antony Timmins who is now Organist and Choir Master at St Marys was on Holiday in the Isle of Wight and sent these amazing picture which just have to be shared**

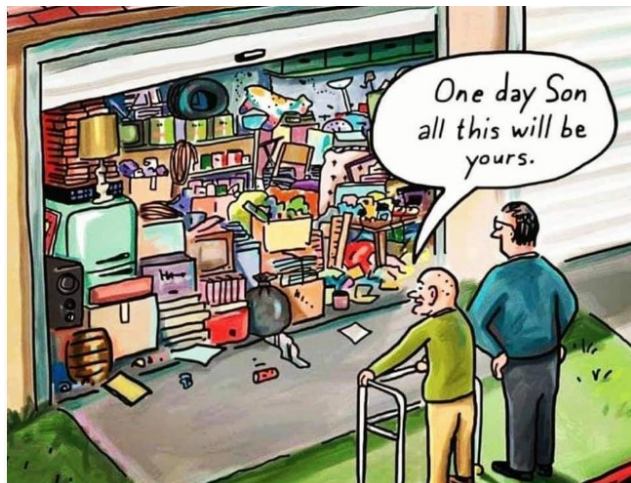
## **Some Highlights from Pauls Ministry in Rivenhall and Silver End**



**Paul with his Special robe for Harvest serving Bread to the  
Children from the Schools across the Parish**



**Mothering Sunday delivering flowers to their mothers**



**HELP WITH  
FUNERAL ARRANGEMENTS  
*RICHARDS*  
FUNERAL SERVICE**



**01376 513114**

78 Newland Street, Witham, CM8 1AH

From advice on how to register a death to making all the arrangements, we're here 24 hours a day.

Members of the National Association of Funeral Directors  
A British Owned Company [www.dignityfuneral.co.uk](http://www.dignityfuneral.co.uk)

***SpeedyBroadband.co.uk***

***Sick Computers my  
Speciality***

- Home Networking Problems Sorted Out
- Computer Viruses Removed
- Operating System Upgrades
- Upgrade to Windows 10

**FOR YOUR FREE SURVEY AND  
QUOTATION CONTACT**

**Peter Hope**

[peterhope@speedybroadband.co.uk](mailto:peterhope@speedybroadband.co.uk)

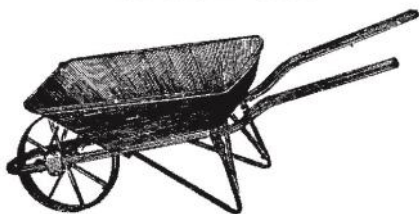
**Tel: 01376 502605**

**Mob: 07904 235101**

**Website**

[www.speedybroadband.co.uk](http://www.speedybroadband.co.uk)

**Ya Garden  
Cares**



**Thorough Attention on  
Bed Maintenance,  
Mowing & Clearance**

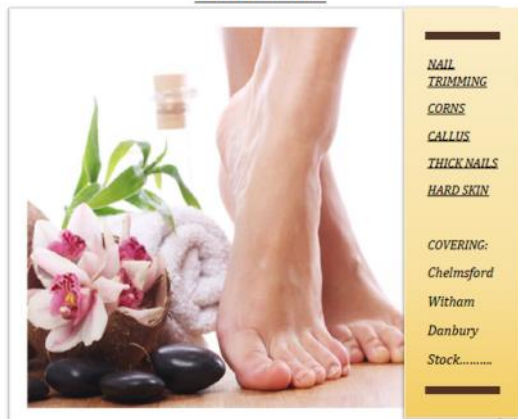
**Telephone  
Barry: 07732337626**

## FOOT HEALTH PRACTITIONER



THE SMAE INSTITUTE

### HOME VISITS



#### NAIL TRIMMING

#### CORNS

#### CALLUS

#### THICK NAILS

#### HARD SKIN

#### COVERING:

Chelmsford

Witham

Danbury

Stock.....

**JAMES NEWMAN (MCFHP,MAFHP)**

**TELEPHONE: 01376 519036**

**MOBILE: 07793971351**



**CARING FOR THE PETS OF WITHAM AND  
THE SURROUNDING AREA FOR 25 YEARS**

**SPECIAL O.A.P. SURGERY THURSDAYS**

**CAT ONLY CLINIC WEDNESDAYS**

**Late night surgery Wednesday till 8pm**

**Surgery Opening hours  
Monday to Saturday for appointments**

**Tel: 01376 500038**

**www.brookendvets.co.uk**



**PC Doctor**  
**Operations Limited**

**For all your computer  
requirements including:**

Virus prevention, detection & removal  
Broadband, Networking, Wireless & Firewall set up  
Email & SPAM filtering  
Hardware Repairs & Upgrades  
Software Faults & Crashes  
Backup Solutions & Data Recovery  
Software Installation & Removal  
Hardware & Software Supplied  
Website Management • Computer Training

**Health  
Checks  
£39.99**

**Office: 01621 891064 • Mobile: 07990 565336**

**Email: support@pcdocops.co.uk**

**Website: www.pcdocops.co.uk**

Monthly subscription service available to provide complete "peace of mind" and allow you to spread the cost of your IT requirements.

Please contact for further information.

## **REYNOLDS CARPENTRY SERVICES**

**For all Carpentry, Joinery  
& Cabinet Making Requirements**

**CSCS Registered**

**30 Years Experience**

**4 Years Apprenticeship**

**City & Guilds and**

**Advanced City & Guilds Qualified**

**Free estimates – No obligation**

**All building work considered**

**Can also make items to order**

**also**

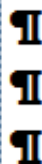
**'curtain poles, tiling, flat packs,  
kitchens, doors, sheds etc, no jobs  
too small'**

**Contact**

**07889 110962**

**Answer phone at other times**

# Jeremy Larke Television services



Telephone: 01376 513645

Mobile: 07947 601619

Email: telerepair@aol.com

All Television Systems Catered  
for Freesat, Freeview, Sky.

- Installations & Repairs To all makes and models
- Full Plasma & LCD Fitting Service
- Wall Mount Brackets Supplied and Fitted
- Aerial & Satellite Dishes Fitted
- Freeview, Freesat & European Channels
- View and Control Your Sky in Other Rooms
- Aerial and Telephone Extension Points Installed



**Don't Delay Call Today**

## Janet C Davies

Dip. F.D. M.B.I.F.D

**BRAINTREE & KELEVEDON'S LADY FUNERAL  
DIRECTOR**

*Offering a full and Comprehensive Funeral Service*

**Telephone 01376 339300**

*For a Personal and Caring 24 hour service*

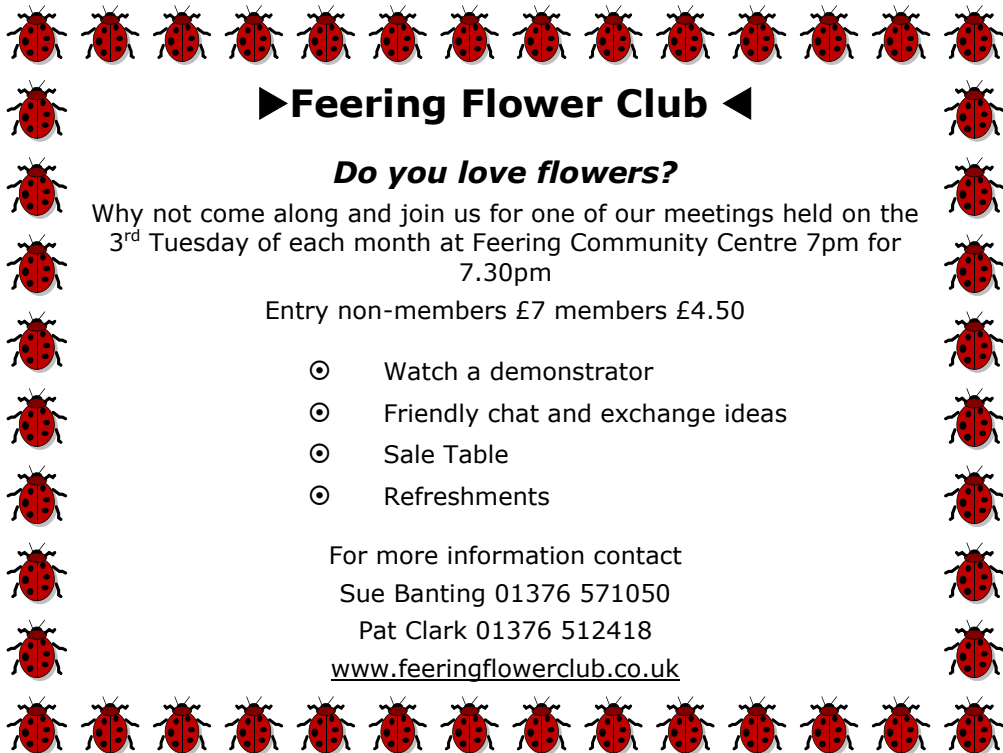
Local Chapel of Rest at Fern House 72 Coggeshall Road Braintree and  
Victoria House, Trews Gardens, Kelvedon

Funerals are arranged and carried out in the Traditional Manner but  
With 'The Gentle Touch'

Pre payment Plans available—Floral Tributes arranges—Woodland Burials  
Bereavement Care—Low Cost Simplicity Funerals - Memorials—Printing  
Catering—DWP Funerals

Part of the Hunnaball Family Group

Members of the National Association of Funeral Directors



## ►Feering Flower Club ◀

### *Do you love flowers?*

Why not come along and join us for one of our meetings held on the 3<sup>rd</sup> Tuesday of each month at Feering Community Centre 7pm for 7.30pm

Entry non-members £7 members £4.50

- ⊙ Watch a demonstrator
- ⊙ Friendly chat and exchange ideas
- ⊙ Sale Table
- ⊙ Refreshments

For more information contact

Sue Banting 01376 571050

Pat Clark 01376 512418

[www.feeringflowerclub.co.uk](http://www.feeringflowerclub.co.uk)

## DANIEL ROBINSON & SONS

Incorporating  
W C BROWN & SONS

**Independent Family Funeral Directors & Monumental Masons**

*A professional, caring, 24 hour service*

Private Chapel of Rest

Fleet of air conditioned limousines

Horse drawn funerals available

Traditional and contemporary funeral services to suit your wishes

Funeral pre-payment plans

Arrangements may be made in the comfort of your own home, if preferred

**Haslers Lane**  
**Great Dunmow**  
Tel: (01371) 874518

**7 Manor Street**  
**Braintree**  
Tel: (01376) 320582

**31 High Street**  
**Halstead**  
Tel: (01787) 475533

[www.drobinson.co.uk](http://www.drobinson.co.uk)

## **Turning the pages of History**

Research by Tracy Scott

This month we are looking at another Rivenhall Review's centre page and this time the person himself is going to tell you about his life in Rivenhall. This is the introduction to the article from August 1961:

There must be few people who have lived for any length of time in the village who have not come across (perhaps through hearing him sing lustily in church) Mr Frederick Pye of Rickstones Road one of our older inhabitants. He can look back almost eighty years and can shed a great deal of light on Rivenhall of the past. But let him tell the story himself.

"I was born in 1882 and went to school in the Workmen's Hall at Rivenhall End when I was five years old. That is where the infants began their schooling in those days, and they were transferred to the present school when they were a little older. The teacher was a Miss Waters who was about 70 years old and spent 30 years teaching here. She used the stick freely and was often visited by mothers wishing to learn the art!

Village life was full of interest even in those days. Once a year we had a Fair outside the Prince of Wales and nearby was our place of worship (Chapel), which still stands. It was packed full Sunday by Sunday – what a difference compared with today! Across the road is the place George Taber started a seed business and nearby was a wheelwright's shop owned by a Mr J. King who made anything from waggons to wheelbarrows and coffins. Among other notable residents at Rivenhall were three Justices of the Peace who lived side by side. John Patten was the first Postmaster and he delivered and collected our letters with a pony and cart. The railway crossed the Oak Road by a wooden bridge and many people were too nervous to pass under it when a train was coming.

I remember the Golden Jubilee of 1887 being held at Rivenhall Place where we were taken in a waggon by Walter Owers and old Gott Randell boiled the plum puddings in a big

tub by his steam engine.

I joined the church choir as a boy, but we had no surplices in those days and the choir entered through the little door. At 12 years of age, I left school and took my first job and, soon after, joined Rivenhall Brass Band. An annual village event was the Ploughing Match at which I learned to plough when I was 14 years old. A lot of beer was drunk at this Match! You would often have seen me when I was 15 with a pair of horses in the Hoo Hall fields and my wages were 4s.6d a week.

Two years later I rose in the hunting field with three packs of hounds for Thomas Usbourne MP for Chelmsford at the time. I often remember political meetings being held at Pond Farm, and the Annual Fruit and Vegetable Show. It was across the road from here that Rivenhall End people drew their drinking water – sometimes the cows stood in it! In spite of that there are quite a few people alive today who drunk the water.

The prices of goods about 75 years ago may interest you. Coal was £1 a ton and coke 16/-. Here are some more: Bread, a 2lb loaf was 5d, Jam 3d a lb, Pork 6d a lb and matches were 1½d a dozen boxes. Home brewed beer could be made for 1d a pint. A haircut cost 2d. Herrings were 2 for 1d, Milk ½d a pint, eggs 20-24 for a shilling, a Chicken 4-5lbs 2/6, a Rabbit 6d and an ounce of tobacco cost 3d.

I have been to Witham and bought 3d worth of pieces for a meat pudding enough for eight people. Men's boots were 4/6 a pair at Fuller's shop, a suit of clothes could be bought for a £1. Potatoes were 2/- a cwt. A farmworker's wage at this time was 11/- a week.

As a young man I left Rivenhall End to work as a groom at King's Yard in London and it was here that I had the pleasure of holding our late King George VI in my arms as a little boy. 58 years ago, I went to Canada and enjoyed a host of other experiences. The first Sunday I was there I was asked to take a religious service as the parson had not arrived! There too, I saw a house built in one day. Altogether I

crossed the Atlantic 14 times.

I was on the Committee of the Witham Brotherhood for several years. I also have taken part in local affairs at Billiards, Garden Fetes etc., and am still able to carry on doing my Duty of the Glory in God".

\*\*\*\*\*

## **2021 Rivenhall Community Cream Tea**

With England's Covid lock-down finally at an end, the Rivenhall Millennium Committee held their postponed community cream tea on the village green on the afternoon of Sunday 8th August.

This was the brainchild of Bob and Jenny Turner, and it was originally planned to be the finalé of the Committee's Scarecrow Competition week ..... but crowd events were unexpectedly banned for a further month (that put the cat among the pigeons)!

Undaunted, the Scarecrow Competition was able to go ahead and generated smiles and much positive comment in the village ... and the competition's sponsors DRH Landscapes pulled-out the stops with their lovely prizes.

So finally the Committee targeted Sunday 8<sup>th</sup> August for their Community Cream Teas. Unlike the month earlier, the weather had become very unsettled .... many nerves!

It was 08:00 in the morning when Bob Turner brought his show-trailer to the green, and he and John Macrae set-up the trailer and the electrics. Wilson Kerr and Jack Prime together brought tables and chairs and laid them out on the green. A big team effort managed to erect two gazebos (one for the raffle and one for shelter ~ should it rain). John brought a big tent in which he displayed photographs of all of the magnificent scarecrows which were around at the village during the competition the month before.

As 3pm approached, there were strong south-westerly gusting winds - far from perfect, so Wilson and Bob busied themselves strapping-down the gazebos. But the wonderful

Rivenhall community came out in force to socially meet for the first time after almost eighteen months - it was lovely to see so many family groups spread out on the green. Jackie Allan kindly volunteered to play a selection of bagpipe sets throughout the afternoon and these were joyously welcomed by all.

Ann Kerr and Lilian Pearce valiantly sold raffle tickets, ably supported by Anne and John Riddlestone. John Macrae erected a large tent in which were displayed some twenty+ images of the earlier Rivenhall scarecrows and delightful shots of the competition's first, second and third winners with their DRH Landscapes prizes. Curiously, two or three of these earlier scarecrows made guest appearances on the green.

Over 100 cream teas were purchased, and heaven knows how many teas and coffees. The kettles were constantly on the boil - ask Bob - I don't think he had a moment to leave the kitchen all afternoon! The cream teas were served by Jennie Turner, Carole McCarthy and Jane Macrae.

To see so many people and families safely together and enjoying themselves again was a delight. Our Essex County Councillor Ross Playle came along and supported the event which was very good of him: he put an amusing note on Rivenhall Community Facebook with an image of his cream tea, saying "before the top blew off the scone!"

The day before was very wet; the following Monday it was very wet: fortunately the Sunday was dry for the cream teas - though admittedly somewhat gusty early on! It was a very weary Millennium Committee who finally left the green about 7:15pm that day - almost twelve hours on the go made a long day, but a successful and enjoyable one.

Might the Millennium Committee do something similar next year? Let us hope so.

Please See Photos on the Cover

## THE 2021 FAMOUS RIVENHALL RACES

The Rivenhall Millennium Committee is hoping to hold this race night in the Village Hall on Saturday 30<sup>th</sup> October. (Includes fish/sausage/chicken & chips supper)

We were unable to hold the 2020 races due to Government lockdown but that has been lifted. However, we are awaiting a meeting of the Rivenhall Playing Field Association to decide what numbers of people they will allow into the hall for an event, and at present there seems to be no date for that decision.

So do pencil **Saturday 30 October** in your diaries and keep an eye of further notices in End to End and on the Rivenhall Community Facebook page.

Is anyone would like to sponsor a race (there are eight races), please contact our Chairman Bob Turner: sponsorship is £25 for one race.

### **SANTA SLEIGH, CAROLS ON THE GREEN etc**

The Rivenhall Millennium Committee's winter festivities are all planned and ready to go!

We **will** erect, light and decorate a Christmas Tree on the village green.

We **will** be giving Christmas Cards to every family in Rivenhall parish

We **will** be giving our usual Christmas gifts to over 70s residents

We **will** take out the Santa Sleigh (weather permitting)

We **will** hold our annual Christmas Tree carols on the green with the Chelmsford Silver Band (weather permitting)

If the Rivenhall Playing Field Association allows us normal capacity use of the village hall, we will host our annual free get-together following the tree carols. This will include mulled wine, pastries, fruit juices, raffle etc with the Chelmsford Silver Band playing from the stage.

\*\*\*\*\*

## **THE QUEEN'S 2022 PLATINUM JUBILEE**

The Rivenhall Millennium Committee is hosting community cream teas on Rivenhall village green on **Sunday 5<sup>th</sup> June 2022** between 2:00 and 5:00 pm; we will also have a large raffle. In the week leading up to this we are having another village scarecrow competition and next year's theme is "Royals". Winners will be announced during the Cream Teas on the Sunday. If other village groups would like to join us with stalls or to hold events, please contact our Chairman Bob Turner for more details.

We are currently enquiring whether the Chelmsford Silver Band is able to join us on the village green that afternoon - watch this space !

\*\*\*\*\*

## **End to End Nature Care.**

By September the earlier evening darkness means we end our weekly Wednesday evening outdoor activities, so our last outing is on **September 1<sup>st</sup>, meeting at 7pm** at the Western Arms in Silver End in order to head off to Silver End pits. On returning we may pop into the pub for an end-of-season drink.

It's not quite the end though, as a by-product of the early darkness means we can instead look at the night sky. On **Friday 10<sup>th</sup> September at 7:30pm** James Abbott is holding an outdoor astronomy session at the sugarbeet stand on the road between Silver End and Rivenhall. All are welcome; do

dress up warm as it is surprising how chilly it can get when you are just standing looking at the stars. It's worth bringing binoculars if you have them, though James will have a telescope set up through which, if the sky is clear, we should be able to see several of the planets as well as stars and nebulae.

While requiring a cloud-free sky of course, astronomy is also impacted by artificial light. In years past, the night sky often had a fiery hue as a result of the use of high-pressure sodium lamps which were efficient but produced a predominantly orange light. Diffused light in the sky prevents us seeing the less bright celestial objects, hence why astronomical observatories are located in remote places and why it can be astonishing just how many stars can be seen when you are away from well-lit areas (and why we can't see stars in the sky during daylight).

Nowadays, the municipal use of cheap-to-run LED lighting plus its increased use in domestic and commercial settings has significantly brightened the night sky in most areas and also created spaces in some towns and villages which are effectively in almost permanent daylight. Several studies have shown how this impacts negatively on wildlife: nocturnal animals are inevitably affected of course but there is also evidence that diurnal animals (those active during the day) can suffer in various ways.

The effects on birds has been studied most extensively. You may have heard a robin or blackbird singing in the middle of the night in a well-lit area and their lack of rest – primarily instinctive, especially during the breeding season – has been shown to reduce overall health and to lessen reproductive success, with fewer, smaller chicks which fledge later than usual. Artificial light can also interfere with migration too, especially as many species navigate by the stars. Some species can potentially benefit; for example peregrine falcons have been seen to hunt using artificial light, although their often avian prey will of course suffer as a result.

Insects and rodents have also been shown to be affected in

various way by artificial light. Caterpillar counts have demonstrated significantly lower numbers in areas lit at night, further experiments supporting the theory that this is not just due to increased predation but also the reluctance of adults to breed and lay eggs there. Our own glow-worm surveys have suggested the proliferation of bright LED lights has reduced the numbers present in our study area, a pattern reflected across many sites in the Essex glow-worm survey and further afield. The coordinator of the Essex survey published a paper on the subject earlier this year which can be viewed freely online ("Glow-worm abundance declines with increasing proximity to artificial lighting" by T. Gardiner & R.K. Didham, January 2021, *Entomologist's Gazette* vol 72 pages 1-11). Using this evidence we are contacting Network Rail to see if they will do something to reduce the brightness of their station lights, particularly during the high-summer peak of the glow-worm breeding season. If you have outdoor LED lights at home or at work then you might also consider making sure they are turned off as much as possible.

Getting back to group activities, looking further ahead we hope to resume our indoor meetings, depending on developments with the ongoing Covid-19 situation of course. These are usually held on the third Wednesday of the month at 8pm but given the continued uncertainty have not been finalised just yet. Further details will be listed on our website [www.e2e.silverend.org](http://www.e2e.silverend.org) and in future issues of this magazine of course. If you would like to know or see more about the group and its activities then we have a Facebook group [www.facebook.com/groups/767416983842784](https://www.facebook.com/groups/767416983842784) or you are welcome to contact me on [simon@e2e.silverend.org](mailto:simon@e2e.silverend.org) or 07947 388180.

## Organisations in Rivenhall

Clerk to Parish Council	Keith Taylor	516975
Email parishclerk@rivenhallparishcouncil.net	meets every first Tuesday	
End to End Nature Care	Simon Taylor	01621 810141
Gardening Club	Carole McCarthy	512781
Meets on 2nd Tuesday at 7.30pm in Village Hall		
Carpet Bowls	Mick Marshall	512836
Meets every Thursday at 7.30pm in Village Hall		
Playing Fields Association	Mick Marshall	01376 512836
Spread Your Wings Dance Acam	Laura Pearson	01376 741317

## Facilities

Hire of Village Hall	email rivenhallvillagehall@gmail.com
Hire of Henry Dixon Hall	Tracy Scott 571551
Oak Store Rivenhall "Open All Hour" Tel AJ	01376 538838

## Organisations in Silver End

Clerk to Parish Council	Mrs B. M. Temple	618464
Email parishclerk@silverendparishcouncil.gov.uk		
Bowls Club	Paul Mann	07551 006906
Children's Centre	Faye Savage	587960
Neighbourhood Police	Braintree Policing Dial 101	
Congregational Church	Sharon Gray	583913
Friendship Club	Maureen Green	585275
Silver End Gad Abouts	Denise Sullens Smith	07952 992782
Gardening Club	Liz Woor	585586
Guiding Group	Carol Hutchings	07857 663959
Neighbourhood Watch	Judy Hill	07896 975839
Scouting Group	Denise Sullens Smith	07952 992782
St Mary's Church (R.C.)	Vivian Phillips	583598
Tennis Club	Jason Cairns	584581
Workers Educational Assoc.	Brian Gillion	583706
Luncheon Club	Helen Thomson	583255
Doctors Surgery		583387
Silver End Heritage Society	Jackie Nesbitt	07707 084608
Silver End United Football Club	Mark Edgell	584639 Web
Site www.silverendunitedfc.co.uk		
Women's Institute	Brenda Warnes	07931 548193
Community Warden	Jackie Windard	07785 515526
Post Office in Co-op - please note that it closes at Lunchtime 1-2pm		
Closes 1 pm Wednesday and 12.30 pm Saturday		
Library: Tues & Thurs - 2pm to 6pm Saturday 9am to 1pm		

HUNNABALL

Family Funeral Services



Here **whenever** you need us

Funerals | Memorials | Pre-paid Funeral Plans

**Hunnaball of Witham**

1 Coach House Way, Newland Street, Witham CM8 1YJ

**01376 511592**

[www.hunnaball.co.uk](http://www.hunnaball.co.uk)

**JANET C DAVIES**

Lady Funeral Directors



**Our Ladies  
in Hats**

*"funerals with  
a gentle touch"*

Funerals | Memorials  
Pre-paid Funeral Plans

**Janet C Davies of Kelvedon**

233 High Street, Kelvedon CO5 9JD

**01376 573691**

[www.hunnaball.co.uk](http://www.hunnaball.co.uk)

# DRH LANDSCAPES

Est. 1987

Quality Comes 1<sup>st</sup>

**Garden Landscape and Design – Hard Landscaping – Soft Landscaping  
Grounds Maintenance for Private and Commercial Premises**

- Are you planning to redesign and landscape your garden?
- Does your garden just need a little TLC or a complete makeover?
- Are you looking for assistance with regular garden maintenance or perhaps a one-off visit to get things back in order?
- Is your lawn looking tired? Would you like a new replacement lawn or artificial lawn instead?

We are a family run business with over 30 years of experience working in the ever changing world of landscape management, business regulations and horticulture, with full public and employer liability insurance, as well as being a fully registered waste carrier with the Environmental Agency.



OFFICE: 01376 514142

We welcome...



EMAIL: [info@drhlandscapes.com](mailto:info@drhlandscapes.com)

[www.drhlandscapes.com](http://www.drhlandscapes.com)

Harcog Centre, 77-83 Maldon Road, Witham, Essex CM8 1HP

